

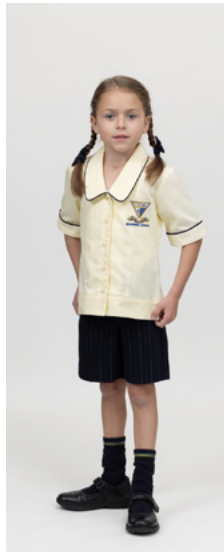
INABURRA UNIFORM GUIDELINES YEARS K-6

JUNIOR GIRLS' UNIFORM - K-6 ALL YEAR ROUND

- Yellow blouse - short OR long sleeved / year round
- Girls K-6: Shorts OR culottes (both knee-length and in striped fabric) OR long pants (plain navy)
- Girls 5-6: Additional option of a knee-length skirt (striped fabric)
- Girls K-6: Navy unisex crew socks with blue and yellow stripes OR long navy socks OR navy tights
- Inaburra navy blazer
- Inaburra school hat (in the playground and at sport)
- Black school shoes
(more details in *How to Wear the School Uniform /Footwear*)



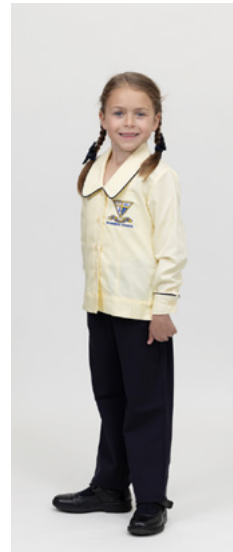
Culotte with short-sleeved blouse (blouse is to be worn untucked)



Shorts with short-sleeved blouse (blouse is to be worn untucked)



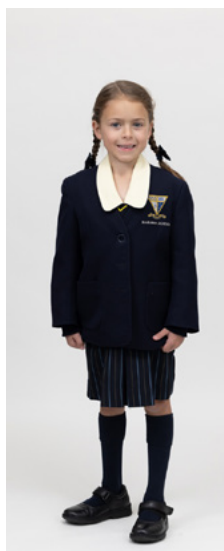
Skirt with long-sleeved blouse (blouse is to be worn untucked)



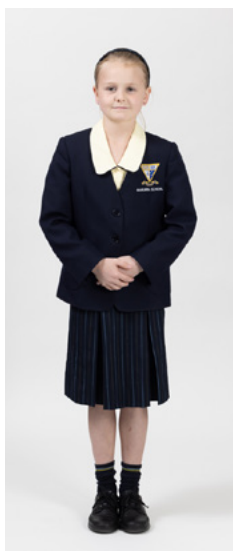
Pants with long-sleeved blouse (blouse is to be worn untucked)



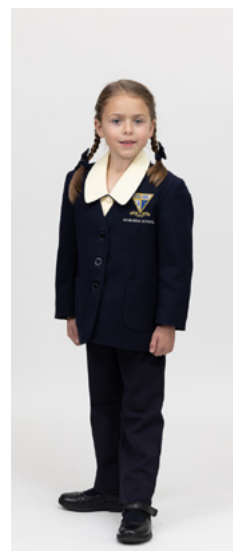
Culottes with blouse and pullover



Culottes with blouse, pullover and blazer



Skirt with blouse and blazer



Pants with blouse and blazer



PRE-2022 SCHOOL UNIFORM GUIDELINES

In 2022 Inaburra introduced the new formal uniform shown above. Students have the opportunity to wear either the new or the old uniform until the end of 2024. Uniform items cannot be mixed; students can wear one style or the other, not a combination. Guidelines for how to wear the pre-2022 school uniform can be found at: <https://rb.gy/sw3msg>

INABURRA UNIFORM GUIDELINES YEARS K-6

JUNIOR BOYS' UNIFORM - K-6 ALL YEAR ROUND

- Yellow shirt - short OR long sleeved / year round
- Boys K-6: Navy shorts OR navy trouser / year round
- Inaburra tri-striped tie (K-2 boys not required to wear ties every day, only formal occasions)
- Navy unisex crew socks with blue and yellow stripes
- Inaburra navy blazer
- Inaburra school hat
- Black school shoes
(more details in *How to Wear the School Uniform /Footwear*)



K-2 - Shorts with short-sleeved shirt and broad brimmed hat. Top button can be undone when the tie is not worn. Shirt must be tucked in.



K-2 - Shorts with long-sleeved shirt and Junior tie (formal). Top button done up. Shirt must be tucked in.



3-6 - Shorts with short-sleeved shirt and Junior tie. Top button done up. Shirt must be tucked in.



Shorts with long-sleeved shirt and vest.



Pants with short-sleeved shirt, Junior tie and broad brimmed hat. Shirt must be tucked in.



Pants with shirt, Junior tie and pullover.



Pants with shirt, Junior tie and blazer (formal).



Pants with shirt, Junior tie, pullover and blazer (formal).

PRE-2022 SCHOOL UNIFORM GUIDELINES

In 2022 Inaburra introduced the new formal uniform shown above. Students have the opportunity to wear either the new or the old uniform until the end of 2024. Uniform items cannot be mixed; students can wear one style or the other, not a combination. Guidelines for how to wear the pre-2022 school uniform can be found at: <https://rb.gy/sw3msg>

INABURRA UNIFORM GUIDELINES YEARS K-6

JUNIOR SPORTS UNIFORM



All Year Round

- Inaburra navy sport shorts (unisex)*
- Inaburra sports polo shirt (unisex)
- Inaburra white sports socks (unisex)
- Inaburra school hat
- Inaburra sports tracksuit (unisex) comprising a zip-up track jacket and track pants (optional). Navy jumper or vest is allowed to be worn under the tracksuit jacket.
- Runners or cross-trainers (See following page for more details on correct footwear)

* *Shorts must be midway between the hip and knee*

House T-Shirts - an optional House coloured t-shirt can be purchased from the Uniform Shop for Sport Carnivals and other House events.

JUNIOR SCHOOL BAG



Primary Physiopak



Airopak



Wheeled trolley bag



Excursion bag



Library bag

SUN SMART SCHOOL HATS

We offer two hat options (one for boys and two for girls). These hat options meet the SunSmart guidelines and are compulsory for all outdoor activities. All staff and students are required to wear SunSmart hats* that protect their face, neck, and ears when outside for play, sport, and teaching.

Students without a SunSmart hat play in the shade - "No hat, play in the shade"

* Hats with a brim size of at least 6cm (adults 7.5cm) classify as Sun Smart.



Straw hat (Girls only)



Broad brimmed hat

INABURRA UNIFORM SHOP

Inaburra's Uniform Shop is the only supplier of the School's official uniform, offering a full range of apparel, school bags and accessories. Inaburra School is proud of its uniform, and expects it to be worn correctly at all times. The Uniform Shop is located at 21 Bodalla Crescent, Bangor opposite the rear entrance of the school.

Please visit the School website <https://www.inaburra.nsw.edu.au/community/parents-students/uniform/> to make an appointment and for more information, or email the Uniform Shop Manager uniforms@inaburra.nsw.edu.au or call 9541 4738.

Please ensure that your student's clothing has their name on it. Student's name and a contact number can be written with a laundry marker on the labels of their uniform items. Alternatively, go onto www.thatsmine.com.au and quote **Inaburra School Code: 2085** for a wide range of sticky labels, shoe labels and iron-on clothing labels, including bundle packs with everything included. Please contact the uniform shop for any assistance with uniforms.

INABURRA UNIFORM GUIDELINES YEARS K-6

HOW TO WEAR THE SCHOOL UNIFORM

SCHOOL BLAZER - Each student must own their own blazer. Blazers will be compulsory throughout the school year at specific events including, but not limited to, formal assemblies, school photographs, when representing the school and some excursions. Students will be advised beforehand when blazers are required. Blazers are the only outer garment that can be worn when it is cold.

JUMPERS and VESTS - School jumpers and vests can be worn as a warm layer under the blazer. They are not to be worn without a blazer over the top at any time, including travelling to and from school.

BOYS' SHIRT - Shirts must be tucked in, top button done up and the tie straight and neat.

LENGTH OF GIRLS' SKIRT/CULOTTES/ SHORTS - Girls' skirts, culottes and shorts must be knee length, i.e. touch somewhere on their knee. Girls are not to roll the waistband of their skirt, culottes or shorts to shorten the overall length.

GIRLS' BLOUSE - The girls' blouse is not intended to be tucked in. It should worn loose over the skirt/shorts/pants.

HATS - Students are required to wear an Inaburra SunSmart hat when outside for play, sport, and teaching throughout the year.

HOW TO WEAR THE SPORT UNIFORM

SPORTS UNIFORM* - Students must wear the Inaburra branded sports polo shirt, sports shorts, sports socks and Sun Smart hat. Sports shorts must be the correct length – between the mid-thigh and the knee. For cooler weather there is also an optional sports tracksuit which can be worn all year round. The tracksuit top must be worn to and from school rather than a jumper or vest. The tracksuit may be worn over the sports shorts and polo and taken off during the day. The sports tracksuit jacket and pants can be worn as separates.

**Full sports uniform is to be worn on Wednesdays for Year K-6 and on days when students have a practical PDHPE lesson.*

PERSONAL APPEARANCE

HAIR

- Hair touching the collar must be neatly tied back
- Uniform in length, can be worn short or long but not a combination of both
- Natural colour
- Neat and tidy at all times
- Fringe above the eyebrows or secured off the face
- Hair accessories, including scrunchies, ribbons and headbands can be navy, white or yellow and not oversized

JEWELLERY

- One watch can be worn
- Girls – one small, plain pair of silver or gold circular studs (4mm max) or sleepers (10mm diameter max) can be worn in the ear lobe only
- No other jewellery can be worn

PERSONAL PRESENTATION

- No makeup is allowed to be worn at school, including nail polish, fake/acrylic nails, fake eyelashes, tinted eyelashes or eyelash extensions
- Eyebrows must be shaped naturally, no slits or short brows
- No nose or other facial piercings
- Boys – must be clean-shaven

FOOTWEAR

SCHOOL SHOES

- Must be shiny, plain, black, polished, lace-up, leather shoes
- No suede shoes, no boots, jogger style, ballet flats
- Must have a low heel, black sole and black stitching only
- No raised ridge around the sides of the shoe

SPORT SHOES

- Shoes to have adequate foot support and cushioning for physical activity (i.e. runners or cross trainers). No canvas or skate style shoes. Must not be low or high top.

SOCKS

- Must be standard Inaburra socks
- No anklet, low-cut or 'invisible' socks to be worn

UNABLE TO WEAR THE UNIFORM? If a student is unable to wear the uniform due to an injury or other unforeseen circumstance, they should provide a note, signed by their Parent or Caregiver, to their Classroom/Home Group teacher at the beginning of the day.